

# ANZSNM

New Zealand Branch  
Annual Scientific Meeting

# 2013





# Invitation

It is our pleasure to welcome you to Palmerston North for this year's branch meeting. As usual we expect an interesting variety of papers and, of course, networking.

One of the themes will be Nuclear Cardiology, with Dr Stephen Stowers, one of the founding members of the American Society of Nuclear Cardiology as guest speaker.

## Invited speakers



### Dale Bailey

Physicist at the Royal North Shore Hospital and Professor at the University of Sydney.

**V/Q SPECT; Optimisation of PET scanning**



### Geoff Schembri

Nuclear Medicine physician. Senior staff specialist in Nuclear Medicine in the Department of Nuclear Medicine, Royal North Shore Hospital and clinical lecturer for the University of Sydney

**V/Q scanning; PET with CT.**



### Stephen Stowers

Cardiologist and one of the founding members of the American Society of Nuclear Cardiology

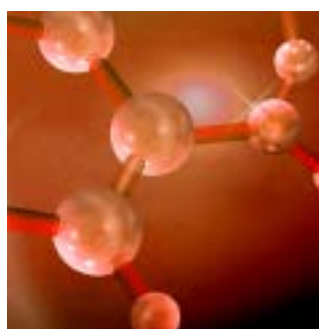
**Nuclear cardiology**



### David Tang

Cardiologist at Palmerston North Hospital

**Nuclear cardiology**





# PROGRAMME OUTLINE

## Saturday 21st September

08:30	Registration – Education centre, Palmerston North Hospital
09:00 - 12:30	Morning session
12:30 - 13:15	Lunch
13:15 - 17:00	Afternoon session
18:00	Departing to Highden – transport will be arranged

## Sunday 22nd September

08:30	Coffee
09:00 - 12:00	Morning session
12:15 - 13:30	Lunch and farewells

Those who wish to attend the Meeting are encouraged to complete the online Registration Form.

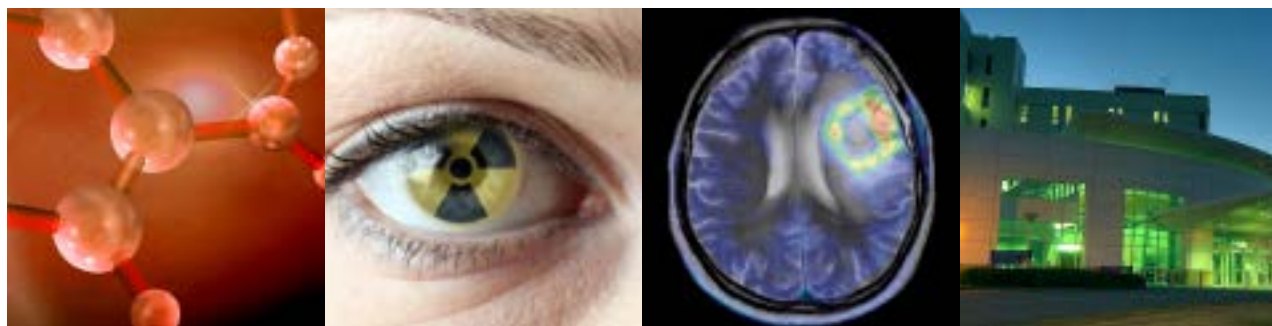
For those who wish to complete a hard copy registration, please print a hard copy form (over the page) which can be completed and faxed or posted to the Meeting Managers at the contact details available on the form.



Click for FREE  
Adobe XI  
download



Another option is to download Adobe Reader 11 to open this PDF and fill in the following form on your computer. You will need a scanned image of your signature.







FIRST NAME: ..... SURNAME: .....

HOSPITAL/BUSINESS NAME: .....

ADDRESS .....

.....

.....

TELEPHONE: ..... FAX .....

EMAIL .....

Please note any special requirements health, diet, mobility etc.

.....

.....

.....

.....

I do not wish my name and email address to be included in the Delegate List.

Member of ANZSNM  Yes

Corporate member  Yes

## SECTION A - TOTAL REGISTRATION FEES IN NZ\$

ANZSNM Member \$250

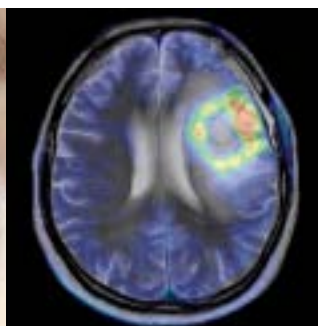
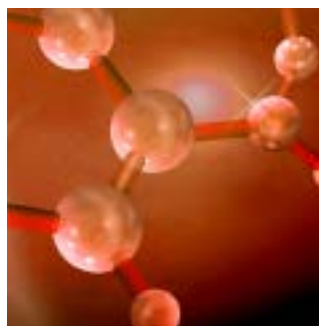
Non-member \$280

## SECTION B - SOCIAL PROGRAMME

Conference Dinner – Saturday evening

[Included in registration]

I require ..... extra tickets at \$95 Total: \$.....





## SECTION C - ACCOMMODATION

The prices quoted for accommodation are NZ\$. We accept only credit card payments for hotel reservations. Your credit card details will be given to the chosen hotel/motel to secure your accommodation booking. We will not be deducting deposits with your registration fees.

**Travelodge Hotel - \$130 per night** (10 minute taxi ride)

Nights required

Friday 20th September     Saturday 21st September

If you wish to stay outside these dates please advise so we can book the extra dates for you.

Type of Room Required:

Single     Double     Twin     Other .....

.....

Number of people requiring accommodation (If children, require ages) .....

I wish to share with .....

.....

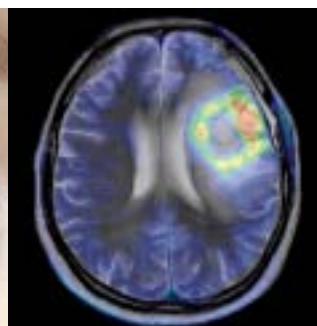
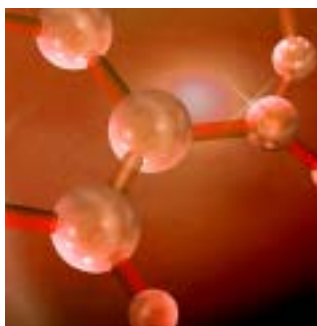
Special requirements .....

.....

Other accommodation.

These motels are all within 5 minutes' walk from the hospital education centre but do not accept provisional block bookings. You need to make your own arrangements with them.

A'Abode	06 3579903
Carramar Motor Inn	06 3558855
Aztec	0800 828082
Braemar Motor Lodge	0800 355805





## TOTALS

SECTION A – REGISTRATION	\$.....
SECTION B – EXTRA DINNER TICKET(S)	\$.....
<b>TOTAL</b>	<b>\$.....</b>

## PAYMENT OPTIONS

Please tick your payment method

- Cheque enclosed – Please make payable to ANZSNM Conference
- Direct Credit – On receipt of your registration form, an invoice with direct credit details will be emailed back to you

Credit Card

Mastercard       Visa       Diners       Amex

Name on card: .....

Card Number: ..... Expiry Date: .....

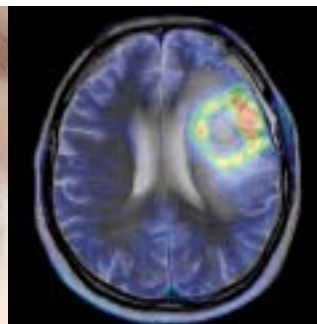
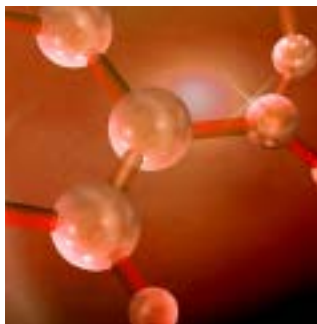
Card Holder's Signature: .....

Amount to charge: .....

Please return Registration and payment to:

ANZSNM Palmy2013 Conference  
c/- SP Conference Management,  
PO Box 4400, Palmerston North 4442,  
New Zealand Fax +64 6 357 1426

Email: [sue@spconferences.co.nz](mailto:sue@spconferences.co.nz)





## Call for presentations and posters

Organisers welcome submissions for oral and poster presentations for the 2013 NZ Branch Meeting of the ANZSNM.

Guidelines for oral and poster presentations are attached.

Applications should be received by

**Friday 2nd August 2013**

All submissions should include the presenter's application form and a brief abstract of 250 words or less.

Please email application form to:

[Peter.Gene@midcentraldhb.govt.nz](mailto:Peter.Gene@midcentraldhb.govt.nz)

or

[Kevin.Smidt@midcentraldhb.govt.nz](mailto:Kevin.Smidt@midcentraldhb.govt.nz)

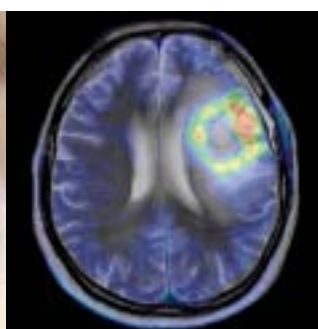
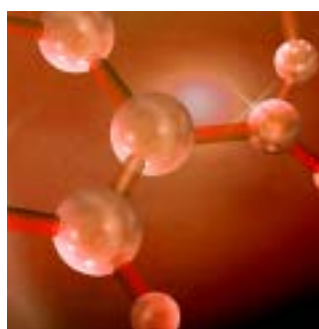
OR fax to:

Nuclear Medicine Department

Palmerston North Hospital

06 350 8453

ANZSNM  
New Zealand Branch  
Annual Scientific Meeting  
**2013**



## AWARD COMPETITION RULES

### PAUL ORR MEMORIAL AWARD

This award will be judged on the oral presentation, quality and impact on Nuclear Medicine, duration about 10 minutes.

The successful New Zealand delegate return airfare is sponsored by the NZ Branch to attend the 2014 ANZSNM Scientific Meeting. The successful delegate is expected to present their paper at this meeting and submit it to the Gamma Gazette for publication of around 2000 words.

This award is open to physicians, radiologists, physicists and technologists that are financial members of the ANZSNM.

### RADPHARM AWARD

This is open to technologists that are financial members of the ANZSNM .

Oral presentation – seven minutes case study, plus three minutes question time.

The winner will be sponsored by Radpharm to receive full early bird registration at the 2014 ANZSNM Scientific Meeting to present their winning case study.

More details are found on [www.radpharm.com.au](http://www.radpharm.com.au)

### POSTER COMPETITION

Open to everyone.

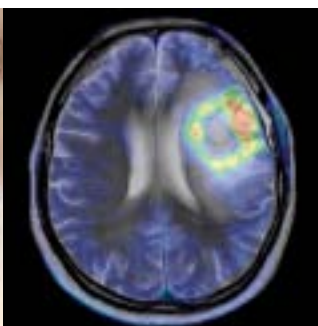
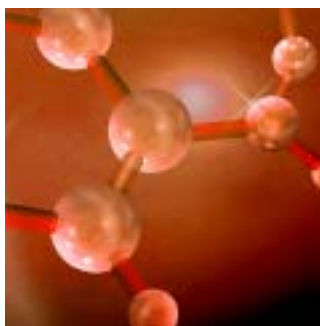
Must be on a topic related to the field of Molecular Imaging.

Attractive cash prize up for grabs.

Recommended poster size – A1 (59.4 X 84.1cm).



A presentation application form needs to be completed to enter the awards.







# PRESENTATION APPLICATION FORM

Name: .....

Place of employment: .....

E-mail address: .....

Postal address: .....

.....

.....

Indicate presentation type by underlining your selection:

Oral Presentation

Paul Orr Award

Poster Award

Radpharm Award

(please see attached rules for awards)

Duration of oral presentation: .....

Title:.....

Abstract (250 words or less): .....

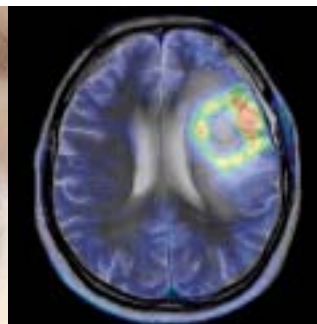
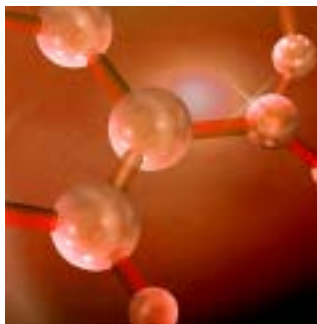
.....

.....

.....

.....

Continue overleaf



.....

.....

.....

.....

.....

.....

.....

.....

.....

.....

.....

.....

.....

.....

.....

.....

.....

.....

.....

.....

.....

.....

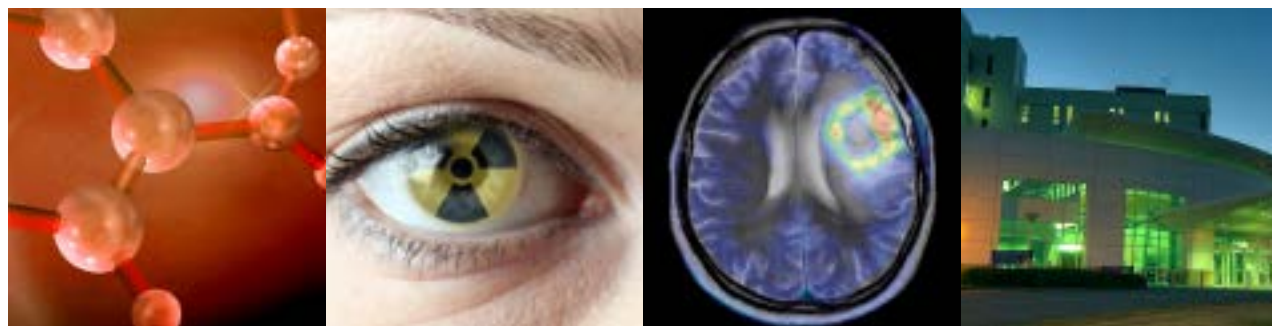
.....

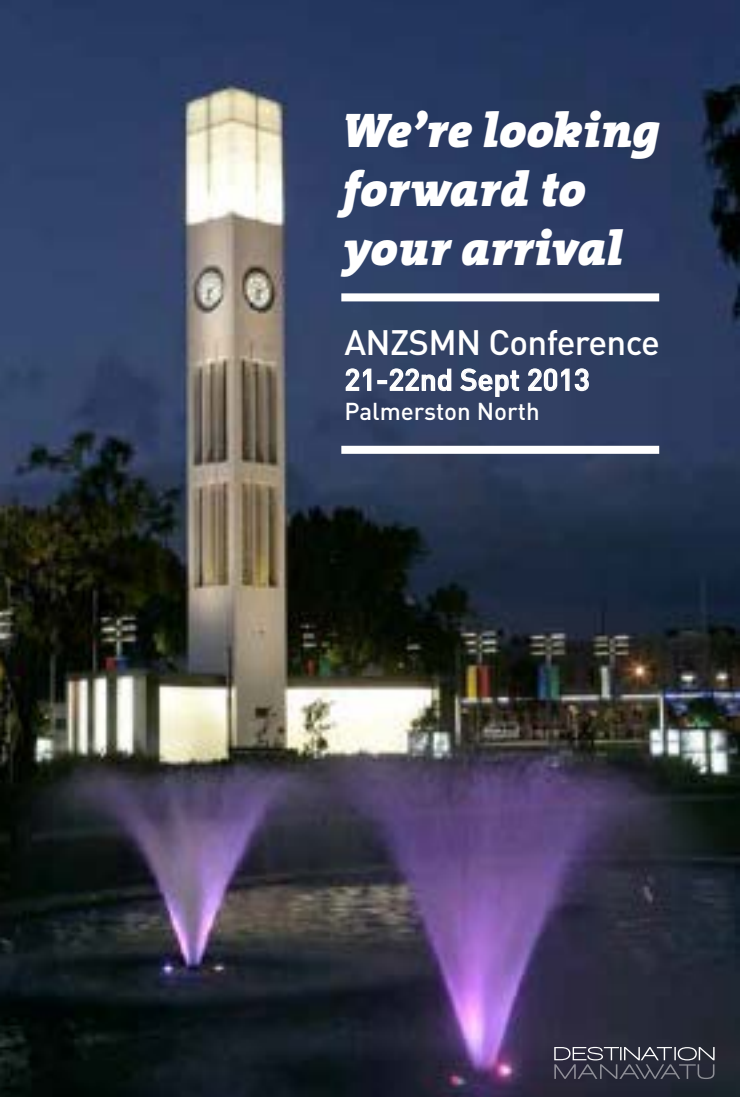
.....

.....

.....

.....





***We're looking  
forward to  
your arrival***

---

**ANZSMN Conference  
21-22nd Sept 2013  
Palmerston North**

---

DESTINATION  
MANAWATU

## *While in Palmerston North..*

A vibrant, connected city with a growing population and buoyant economy, Palmerston North has a rich arts and cultural scene with a multitude of public sculptures, galleries, theatres and performance venues.

The City offers a modern and diverse dining experience. Take your taste buds on a world tour, dining on a plethora of international cuisine options.

A must see for all sports fans is the New Zealand Rugby Museum. A world-class museum with a treasure trove of information, memorabilia and interactive fun.

Golf enthusiasts can 'tee off' at one of the many courses in the City or Region – from the oldest golf course in New Zealand to the newly opened corporate Country Club.





## *Outside the City boundary..*

Manawatu is becoming well-known as a cycling destination with easy and scenic rides through to challenging hill rides testing the fittest athletes.

Palmerston North sits beneath the magnificent Tararua and Ruahine Ranges that form part of the extensive Department of Conservation estate in New Zealand. The scenery and terrain is rugged and wild – an adventure playground in close proximity to the City. The Ranges offer walks and hikes to suit all ages and fitness levels. One of the popular hikes is the impressive Manawatu Gorge Walk, which has spectacular views.



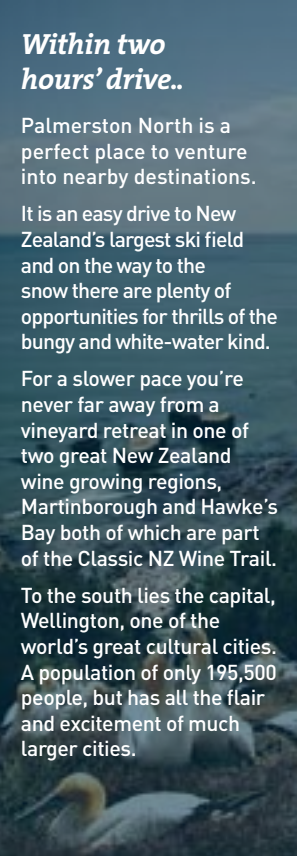
## *Within two hours' drive..*

Palmerston North is a perfect place to venture into nearby destinations.

It is an easy drive to New Zealand's largest ski field and on the way to the snow there are plenty of opportunities for thrills of the bungy and white-water kind.

For a slower pace you're never far away from a vineyard retreat in one of two great New Zealand wine growing regions, Martinborough and Hawke's Bay both of which are part of the Classic NZ Wine Trail.

To the south lies the capital, Wellington, one of the world's great cultural cities. A population of only 195,500 people, but has all the flair and excitement of much larger cities.



## ***Some great reasons to visit:***

New Zealand Rugby Museum

Tui Brewery

Te Manawa - Museum of art, science & history

Manawatu Gorge Jet-Boat Experience

Owlcatraz Wildlife Park

The Herb Farm - 100% natural body products, gardens & café.

Coach House Museum

Mokai Gravity Canyon

Mangaweka Adventure Company

Victoria Esplanade

Manawatu Gorge Walk

River Valley

Feilding Saleyards - One of the largest in the Southern Hemisphere.

Te Apiti Wind-farm





## ***Destination Manawatu***

### ***Palmerston North & Manawatu Convention Bureau***

If you're organising a large conference, convention, an association meeting or a major exhibition, Palmerston North & Manawatu Convention Bureau are here to bring Palmerston North's vibrancy to your event. We offer impartial, expert knowledge and services to help you make the best choices and give you the best possible value, resulting in a superb experience for your delegates.

Conference Bids • Venue Search • Activity ideas and much more

**E. [phil@manawatunz.co.nz](mailto:phil@manawatunz.co.nz)**

**P. (06) 350 1810**

**W: [www.manawatunz.co.nz/conferences](http://www.manawatunz.co.nz/conferences)**



Designed by



Palmerston North  
E: [design@swampthing.co.nz](mailto:design@swampthing.co.nz)  
P: 06 358 5517  
M: 027470 9829

[www.swampthing.co.nz](http://www.swampthing.co.nz)